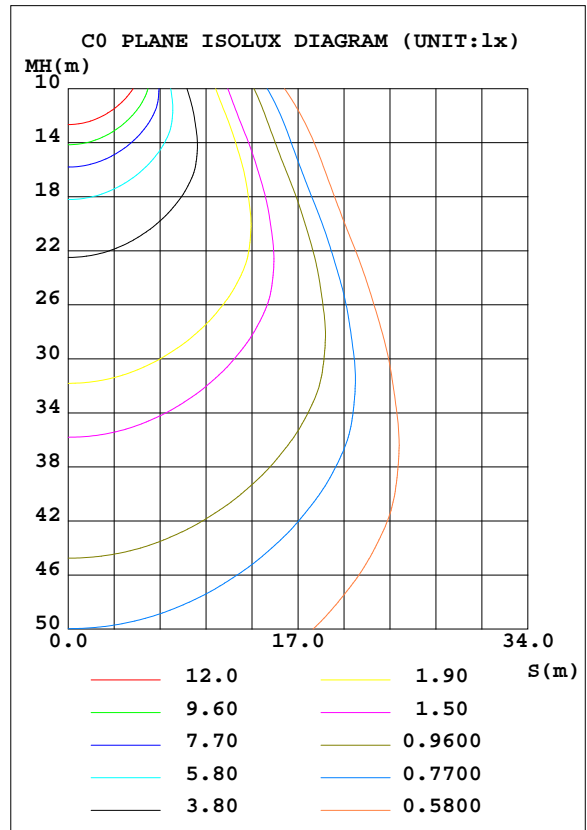
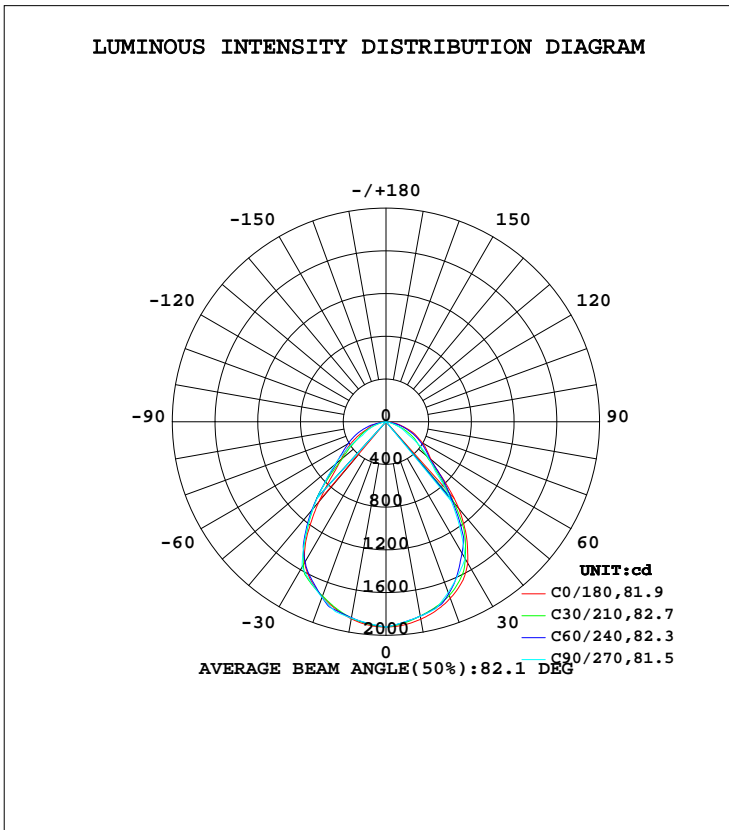


LUMINAIRE PHOTOMETRIC TEST REPORT

Test:U:230.23V I:0.1378A P:30.969W PF:0.9763 Freq:50.00Hz Lamp Flux:3565.7x1 lm		
NAME: IL-PN595U(S) 3.000K	TYPE:	WEIGHT:
SPEC.:	DIM.:	SERIAL No.:
MFR.: EVERFINE	SUR.:550*550	Shielding Angle:

DATA OF LAMP		PHOTOMETRIC DATA Eff: 115.14 lm/W			
MODEL	IL-PN595U(S) 3.000K	Imax(cd)	1922	S/MH(C0/180)	1.18
NOMINAL POWER(W)	30	LOR(%)	100.0	S/MH(C90/270)	1.13
RATED VOLTAGE(V)	230	TOTAL FLUX(lm)	3565.7	η UP, DN(C0-180)	0.0,51.4
NOMINAL FLUX(lm)	3565.7	CIE CLASS	DIRECT	η UP, DN(C180-360)	0.0,48.6
LAMPS INSIDE	1	η up(%)	0.0	CIBSE SHR NOM	1.25
TEST VOLTAGE(V)	230	η down(%)	100.0	CIBSE SHR MAX	1.25



βH() Range:-90 - 90DEG
 βH() Interval: 1.0DEG
 Test Speed: HIGH
 Temperature:25.3DEG
 Operators:
 Test Date:2023-06-03

V(B) Range:-75 - 75DEG
 V(B) Interval: 5.0DEG
 Test System:EVERFINE GO-2000B_V1 SYSTEM V2.0.404.7
 Humidity:65.0%
 Test Distance:8.240m [K=1.0000]
 Remarks: IL-PN595U(S) 3.000K

ZONAL FLUX DIAGRAM

ZONAL FLUX DIAGRAM:

γ	C0	C45	C90	C135	C180	C225	C270	C315	γ	Φ zone	Φ total	%lum, lamp
10	1873	1863	1867	1859	1878	1847	1848	1849	0- 10	179.8	179.8	5.04,5.04
20	1743	1766	1750	1763	1759	1736	1701	1741	10- 20	510.2	689.9	19.3,19.3
30	1524	1489	1572	1493	1529	1429	1482	1430	20- 30	748.9	1439	40.4,40.4
40	974.8	1075	1066	1107	1061	1028	929.7	990.4	30- 40	794.3	2233	62.6,62.6
50	550.1	607.4	627.2	625.1	552.9	566.2	514.3	536.0	40- 50	589.0	2822	79.1,79.1
60	349.6	339.1	255.0	333.5	392.0	310.9	235.6	291.2	50- 60	377.4	3200	89.7,89.7
70	176.0	219.3	134.7	200.8	240.0	193.5	115.2	203.7	60- 70	236.5	3436	96.4,96.4
80	60.12	101.7	0	96.97	91.42	85.58	0	82.41	70- 80	116.7	3553	99.6,99.6
90	1.205	0	0	0	1.673	0	0	0	80- 90	12.91	3566	100,100
100									90-100			
110									100-110			
120									110-120			
130									120-130			
140									130-140			
150									140-150			
160									150-160			
170									160-170			
180									170-180			
DEG	LUMINOUS INTENSITY:cd									UNIT:lm		

Conical surface Flux(90deg): 2561.5 lm

%lum = 71.8%
%lamp = 71.8%

Conical surface Flux(120deg): 3199.5 lm

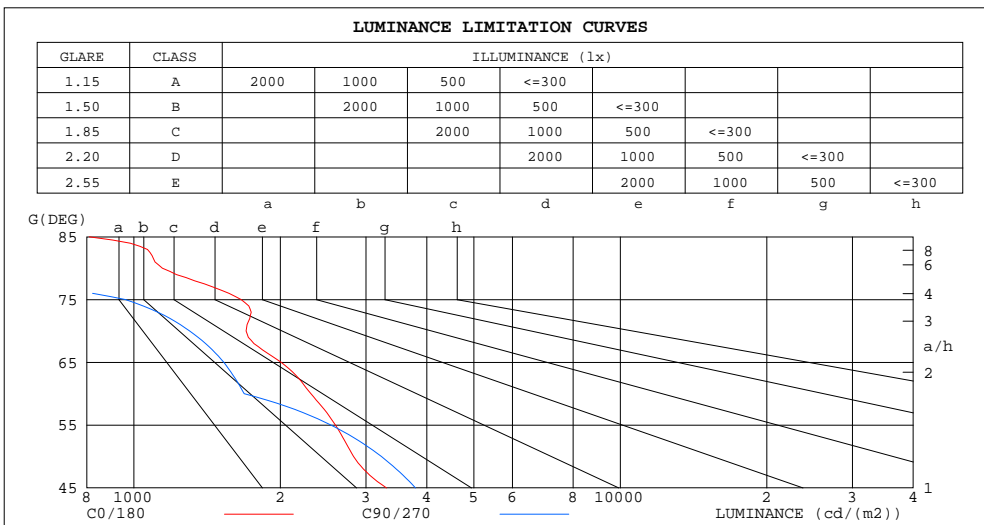
%lum = 89.7%
%lamp = 89.7%

β H() Range:-90 - 90DEG
 β H() Interval: 1.0DEG
Test Speed: HIGH
Temperature:25.3DEG
Operators:
Test Date:2023-06-03

V(B) Range:-75 - 75DEG
V(B) Interval: 5.0DEG
Test System:EVERFINE GO-2000B_V1 SYSTEM V2.0.404.7
Humidity:65.0%
Test Distance:8.240m [K=1.0000]
Remarks: IL-PN595U(S) 3.000K

LUMINANCE LIMITATION CURVES

Test:U:230.23V I:0.1378A P:30.969W PF:0.9763 Freq:50.00Hz Lamp Flux:3565.7x1 lm		
NAME: IL-PN595U(S) 3.000K	TYPE:	WEIGHT:
SPEC.:	DIM.:	SERIAL No.:
MFR.: EVERFINE	SUR.:550*550	Shielding Angle:



LUMINANCE cd/(m2)		
G (DEG)	C0/180	C90/270
85	809	0
80	1144	0
75	1661	961
70	1701	1302
65	2007	1531
60	2311	1686
55	2595	2542
50	2829	3226
45	3305	3793

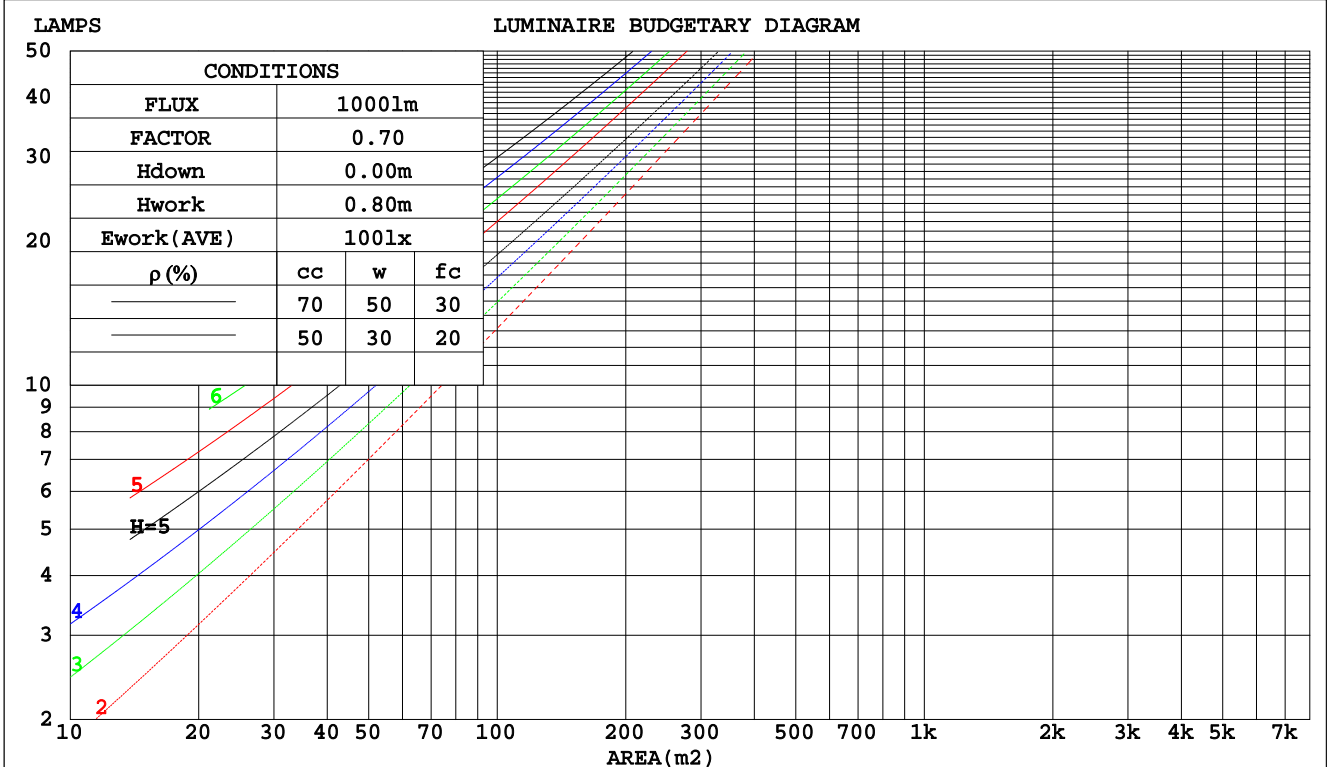
β H() Range:-90 - 90DEG
 β H() Interval: 1.0DEG
 Test Speed: HIGH
 Temperature:25.3DEG
 Operators:
 Test Date:2023-06-03

V(B) Range:-75 - 75DEG
 V(B) Interval: 5.0DEG
 Test System:EVERFINE GO-2000B_V1 SYSTEM V2.0.404.7
 Humidity:65.0%
 Test Distance:8.240m [K=1.0000]
 Remarks: IL-PN595U(S) 3.000K

CU AND LUMINAIRE BUDGETARY ESTIMATE DIAGRAM

Test:U:230.23V I:0.1378A P:30.969W PF:0.9763 Freq:50.00Hz Lamp Flux:3565.7x1 lm		
NAME: IL-PN595U(S) 3.000K	TYPE:	WEIGHT:
SPEC.:	DIM.:	SERIAL No.:
MFR.: EVERFINE	SUR.:550*550	Shielding Angle:

pcc	80%			70%			50%			30%			10%			0
	50%	30%	10%	50%	30%	10%	50%	30%	10%	50%	30%	10%	50%	30%	10%	0
pw																
pfc	20%			20%			20%			20%			20%			0
RCR	RCR:Room Cavity Ratio															
	Coefficients of Utilization(CU)															
0.0	1.19	1.19	1.19	1.16	1.16	1.16	1.11	1.11	1.11	1.06	1.06	1.06	1.02	1.02	1.02	1.00
1.0	1.07	1.04	1.01	1.05	1.02	.99	1.01	.98	.96	.97	.95	.93	.93	.92	.90	.88
2.0	.96	.90	.86	.94	.89	.85	.91	.86	.83	.88	.84	.81	.85	.82	.79	.77
3.0	.86	.79	.74	.85	.78	.73	.82	.76	.72	.79	.75	.71	.77	.73	.70	.68
4.0	.78	.70	.65	.77	.70	.64	.74	.68	.63	.72	.67	.63	.70	.66	.62	.60
5.0	.71	.63	.57	.70	.62	.57	.68	.61	.56	.66	.60	.56	.64	.59	.55	.53
6.0	.65	.57	.51	.64	.56	.51	.62	.55	.51	.60	.55	.50	.59	.54	.50	.48
7.0	.59	.52	.46	.59	.51	.46	.57	.50	.46	.56	.50	.45	.54	.49	.45	.43
8.0	.55	.47	.42	.54	.47	.42	.53	.46	.41	.52	.46	.41	.51	.45	.41	.39
9.0	.51	.43	.38	.50	.43	.38	.49	.42	.38	.48	.42	.38	.47	.42	.38	.36
10.0	.47	.40	.35	.47	.40	.35	.46	.39	.35	.45	.39	.35	.44	.38	.35	.33



βH() Range:-90 - 90DEG
 βH() Interval: 1.0DEG
 Test Speed: HIGH
 Temperature:25.3DEG
 Operators:
 Test Date:2023-06-03

V(B) Range:-75 - 75DEG
 V(B) Interval: 5.0DEG
 Test System:EVERFINE GO-2000B_V1 SYSTEM V2.0.404.7
 Humidity:65.0%
 Test Distance:8.240m [K=1.0000]
 Remarks: IL-PN595U(S) 3.000K

WEC AND CCEC

Test:U:230.23V I:0.1378A P:30.969W PF:0.9763 Freq:50.00Hz Lamp Flux:3565.7x1 lm		
NAME: IL-PN595U(S) 3.000K	TYPE:	WEIGHT:
SPEC.:	DIM.:	SERIAL No.:
MFR.: EVERFINE	SUR.:550*550	Shielding Angle:

ρcc	80%			70%			50%			30%			10%			0
ρw	50%	30%	10%	50%	30%	10%	50%	30%	10%	50%	30%	10%	50%	30%	10%	0
ρfc	20%			20%			20%			20%			20%			0
RCR	RCR:Room Cavity Ratio						Wall Exitance Coefficients(WEC)									
0.0																
1.0	.247	.141	.045	.241	.137	.044	.228	.131	.042	.216	.124	.040	.205	.119	.038	
2.0	.239	.131	.040	.233	.128	.040	.222	.123	.038	.212	.119	.037	.202	.114	.036	
3.0	.226	.120	.036	.221	.118	.036	.211	.114	.035	.202	.111	.034	.193	.107	.033	
4.0	.212	.110	.032	.208	.109	.032	.199	.106	.032	.191	.103	.031	.183	.100	.030	
5.0	.199	.101	.029	.195	.100	.029	.187	.098	.029	.180	.095	.028	.174	.093	.028	
6.0	.187	.094	.027	.184	.093	.027	.177	.091	.026	.170	.089	.026	.164	.087	.026	
7.0	.176	.087	.025	.173	.086	.025	.167	.084	.024	.161	.083	.024	.156	.081	.024	
8.0	.166	.081	.023	.163	.080	.023	.158	.079	.023	.153	.077	.022	.148	.076	.022	
9.0	.157	.076	.021	.155	.075	.021	.150	.074	.021	.145	.073	.021	.141	.072	.021	
10.0	.149	.071	.020	.147	.071	.020	.142	.070	.020	.138	.069	.019	.134	.067	.019	

ρcc	80%			70%			50%			30%			10%			0
ρw	50%	30%	10%	50%	30%	10%	50%	30%	10%	50%	30%	10%	50%	30%	10%	0
ρfc	20%			20%			20%			20%			20%			0
RCR	RCR:Room Cavity Ratio						Ceiling Cavity Exitance Coefficients(CCEC)									
0.0	.190	.190	.190	.163	.163	.163	.111	.111	.111	.064	.064	.064	.020	.020	.020	
1.0	.176	.157	.139	.151	.134	.120	.103	.093	.083	.059	.054	.048	.019	.017	.016	
2.0	.165	.132	.104	.142	.114	.090	.097	.079	.063	.056	.046	.037	.018	.015	.012	
3.0	.156	.114	.081	.134	.098	.070	.092	.068	.049	.053	.040	.029	.017	.013	.009	
4.0	.148	.100	.064	.127	.087	.055	.087	.060	.039	.050	.035	.023	.016	.012	.008	
5.0	.140	.089	.052	.120	.077	.045	.083	.054	.032	.048	.032	.019	.015	.010	.006	
6.0	.133	.081	.043	.115	.070	.037	.079	.049	.026	.046	.029	.016	.015	.009	.005	
7.0	.127	.074	.036	.109	.064	.032	.075	.045	.022	.044	.026	.013	.014	.009	.004	
8.0	.121	.068	.031	.104	.059	.027	.072	.041	.019	.042	.024	.011	.014	.008	.004	
9.0	.115	.063	.027	.099	.054	.024	.069	.038	.017	.040	.023	.010	.013	.007	.003	
10.0	.110	.058	.024	.095	.051	.021	.066	.036	.015	.038	.021	.009	.012	.007	.003	

βH() Range:-90 - 90DEG
 βH() Interval: 1.0DEG
 Test Speed: HIGH
 Temperature:25.3DEG
 Operators:
 Test Date:2023-06-03

V(B) Range:-75 - 75DEG
 V(B) Interval: 5.0DEG
 Test System:EVERFINE GO-2000B_V1 SYSTEM V2.0.404.7
 Humidity:65.0%
 Test Distance:8.240m [K=1.0000]
 Remarks: IL-PN595U(S) 3.000K

UGR(Unified Glare Rating) Table

Test:U:230.23V I:0.1378A P:30.969W PF:0.9763 Freq:50.00Hz Lamp Flux:3565.7x1 lm										
NAME: IL-PN595U(S) 3.000K					TYPE:			WEIGHT:		
SPEC.:					DIM.:			SERIAL No.:		
MFR.: EVERFINE					SUR.:550*550			Shielding Angle:		
ceiling/cavity	0.7	0.7	0.5	0.5	0.3	0.7	0.7	0.5	0.5	0.3
walls	0.5	0.3	0.5	0.3	0.3	0.5	0.3	0.5	0.3	0.3
working plane	0.2	0.2	0.2	0.2	0.2	0.2	0.2	0.2	0.2	0.2
Room dimensions	Viewed crosswise					Viewed endwise				
x = 2H y = 2H	15.1	16.4	15.4	16.6	16.8	15.7	17.0	16.0	17.2	17.4
3H	15.9	17.2	16.2	17.4	17.6	16.4	17.6	16.7	17.8	18.0
4H	16.3	17.5	16.6	17.7	18.0	16.6	17.7	16.9	17.9	18.2
6H	16.6	17.6	16.9	17.9	18.2	16.5	17.6	16.8	17.8	18.1
8H	16.6	17.6	16.9	17.9	18.2	16.5	17.5	16.8	17.8	18.0
12H	16.6	17.6	16.9	17.9	18.2	16.4	17.4	16.8	17.7	18.0
4H 2H	15.5	16.7	15.8	16.9	17.1	16.0	17.2	16.3	17.4	17.7
3H	16.4	17.4	16.7	17.7	18.0	17.1	18.1	17.4	18.4	18.7
4H	16.8	17.7	17.2	18.0	18.4	17.5	18.4	17.9	18.7	19.0
6H	17.1	17.9	17.5	18.3	18.6	17.5	18.3	17.9	18.7	19.0
8H	17.2	17.9	17.6	18.3	18.7	17.5	18.2	17.9	18.6	19.0
12H	17.3	17.9	17.7	18.3	18.7	17.4	18.1	17.9	18.5	18.9
8H 4H	17.1	17.8	17.5	18.2	18.6	17.7	18.5	18.1	18.8	19.2
6H	17.4	18.1	17.9	18.5	18.9	17.8	18.4	18.3	18.8	19.3
8H	17.6	18.1	18.0	18.5	19.0	17.8	18.3	18.2	18.7	19.2
12H	17.7	18.1	18.1	18.6	19.0	17.7	18.2	18.2	18.6	19.1
12H 4H	17.1	17.7	17.5	18.1	18.5	17.7	18.4	18.1	18.8	19.2
6H	17.5	18.0	17.9	18.4	18.8	17.8	18.3	18.3	18.8	19.2
8H	17.6	18.0	18.0	18.5	18.9	17.8	18.2	18.2	18.7	19.1
Variations with the observer position at spacings:										
S = 1.0H	+ 0.6 / - 0.7					+ 0.4 / - 0.5				
1.5H	+ 0.5 / - 0.5					+ 0.4 / - 0.4				
2.0H	+ 1.0 / - 0.7					+ 0.9 / - 1.8				

CIE Pub.117, 3566 lm Total Lamp Luminous Flux Corrected (8log(F/F0) = 4.4)

βH() Range:-90 - 90DEG
 βH() Interval: 1.0DEG
 Test Speed: HIGH
 Temperature:25.3DEG
 Operators:
 Test Date:2023-06-03

V(B) Range:-75 - 75DEG
 V(B) Interval: 5.0DEG
 Test System:EVERFINE GO-2000B_V1 SYSTEM V2.0.404.7
 Humidity:65.0%
 Test Distance:8.240m [K=1.0000]
 Remarks: IL-PN595U(S) 3.000K

UTILIZATION FACTORS TABLE

Test:U:230.23V I:0.1378A P:30.969W PF:0.9763 Freq:50.00Hz Lamp Flux:3565.7x1 lm		
NAME: IL-PN595U(S) 3.000K	TYPE:	WEIGHT:
SPEC.:	DIM.:	SERIAL No.:
MFR.: EVERFINE	SUR.:550*550	Shielding Angle:

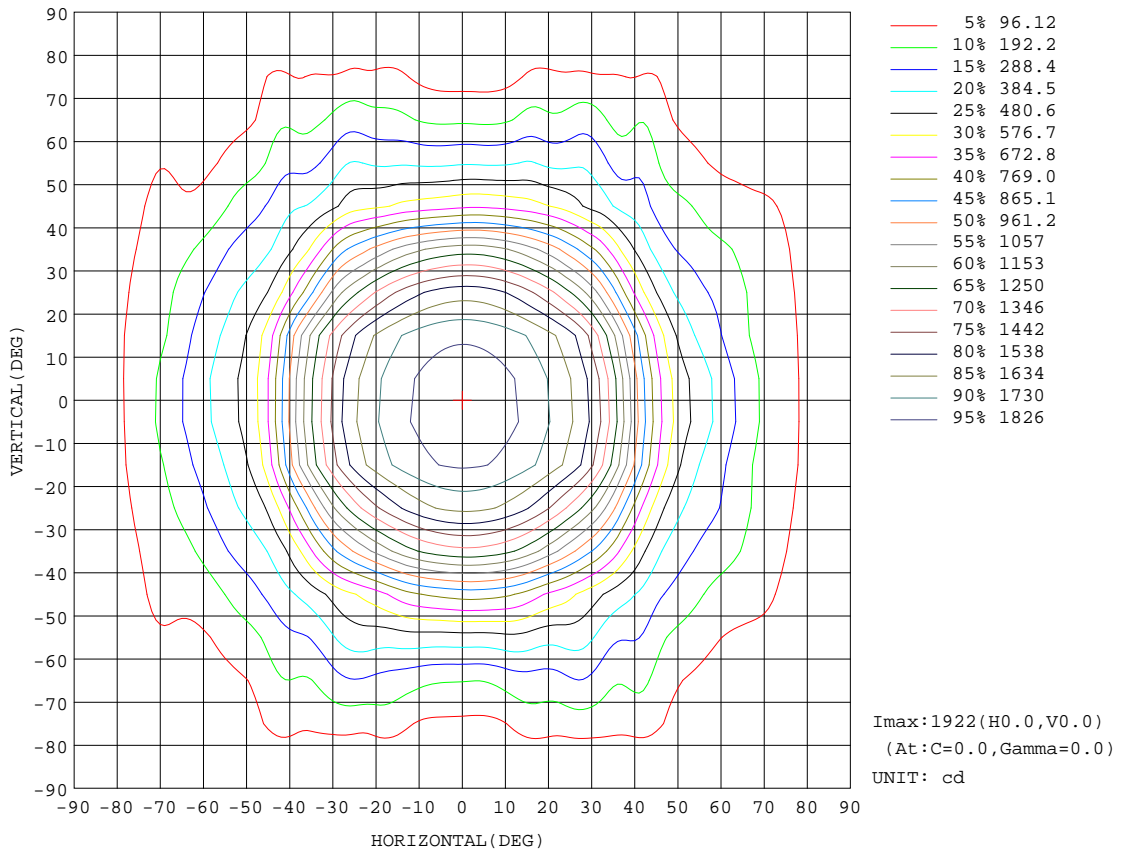
REFLECTANCE										
Ceiling	0.8	0.8	0.8	0.7	0.7	0.7	0.5	0.5	0.5	0
Walls	0.7	0.5	0.3	0.7	0.5	0.3	0.7	0.5	0.3	0
Working plane	0.2	0.2	0.2	0.2	0.2	0.2	0.2	0.2	0.2	0
ROOM INDEX	UTILIZATION FACTORS(PERCENT) k(RI) x RCR = 5									
k = 0.60	68	58	53	68	58	53	67	58	52	47
0.80	78	68	62	77	68	62	75	67	62	56
1.00	85	76	70	84	76	70	82	77	70	64
1.25	91	83	77	90	82	77	88	81	76	70
1.50	96	88	82	94	87	82	91	85	81	75
2.00	101	94	89	99	93	89	96	91	87	80
2.50	104	98	93	102	97	92	99	94	90	83
3.00	106	101	97	105	100	96	101	97	94	86
4.00	110	105	102	107	104	100	103	100	98	90
5.00	111	108	105	109	106	103	105	102	100	92
ROOM INDEX	UF(total)									Direct
According to DIN EN 13032-2 2004			Suspended				SHRNOM = 1.25			

H(β) Range:-90 - 90DEG
 β H() Interval: 1.0DEG
 Test Speed: HIGH
 Temperature:25.3DEG
 Operators:
 Test Date:2023-06-03

V(B) Range:-75 - 75DEG
 V(B) Interval: 5.0DEG
 Test System:EVERFINE GO-2000B_V1 SYSTEM V2.0.404.7
 Humidity:65.0%
 Test Distance:8.240m [K=1.0000]
 Remarks: IL-PN595U(S) 3.000K

ISOCANDELA DIAGRAM

Test:U:230.23V I:0.1378A P:30.969W PF:0.9763 Freq:50.00Hz Lamp Flux:3565.7x1 lm		
NAME: IL-PN595U(S) 3.000K	TYPE:	WEIGHT:
SPEC.:	DIM.:	SERIAL No.:
MFR.: EVERFINE	SUR.:550*550	Shielding Angle:



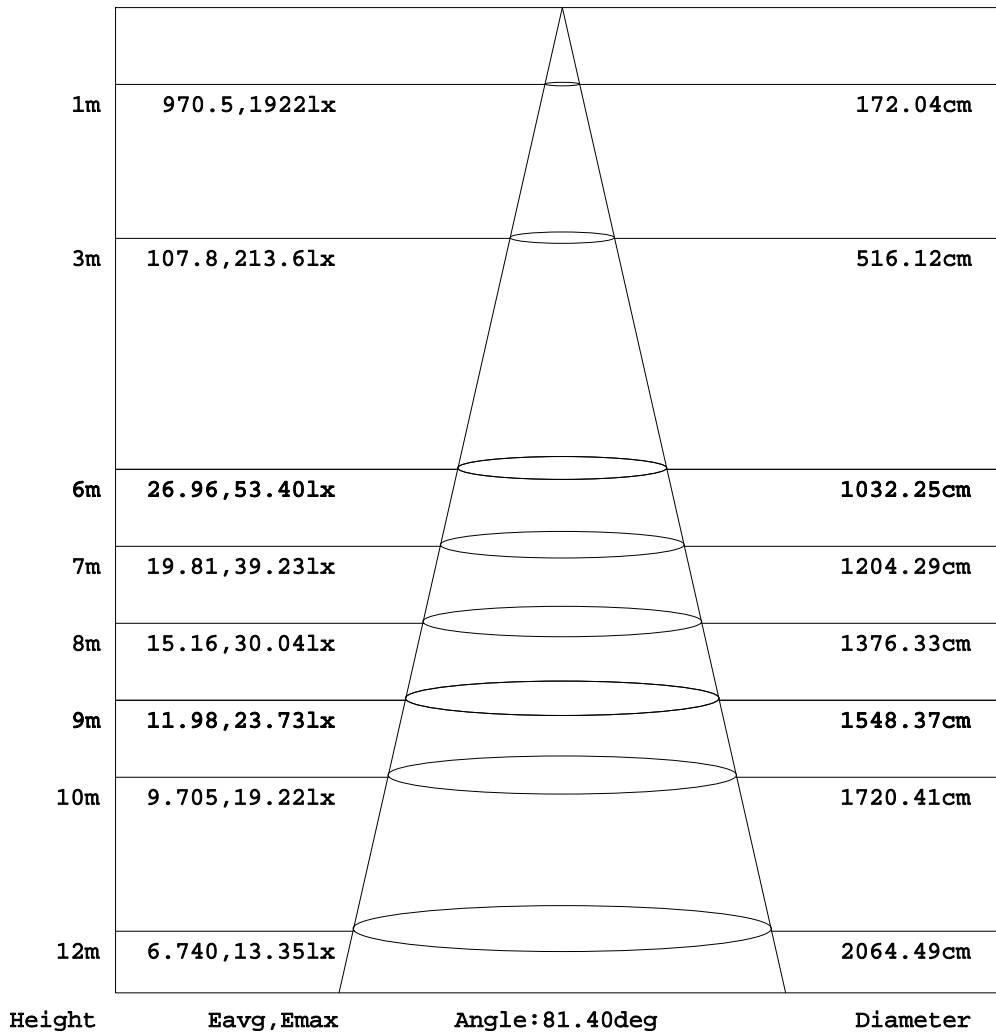
βH() Range:-90 - 90DEG
 βH() Interval: 1.0DEG
 Test Speed: HIGH
 Temperature:25.3DEG
 Operators:
 Test Date:2023-06-03

V(B) Range:-75 - 75DEG
 V(B) Interval: 5.0DEG
 Test System:EVERFINE GO-2000B_V1 SYSTEM V2.0.404.7
 Humidity:65.0%
 Test Distance:8.240m [K=1.0000]
 Remarks: IL-PN595U(S) 3.000K

AAI Figure

Test:U:230.23V I:0.1378A P:30.969W PF:0.9763 Freq:50.00Hz Lamp Flux:3565.7x1 lm		
NAME: IL-PN595U(S) 3.000K	TYPE:	WEIGHT:
SPEC.:	DIM.:	SERIAL No.:
MFR.: EVERFINE	SUR.:550*550	Shielding Angle:

Flux out:2304 lm



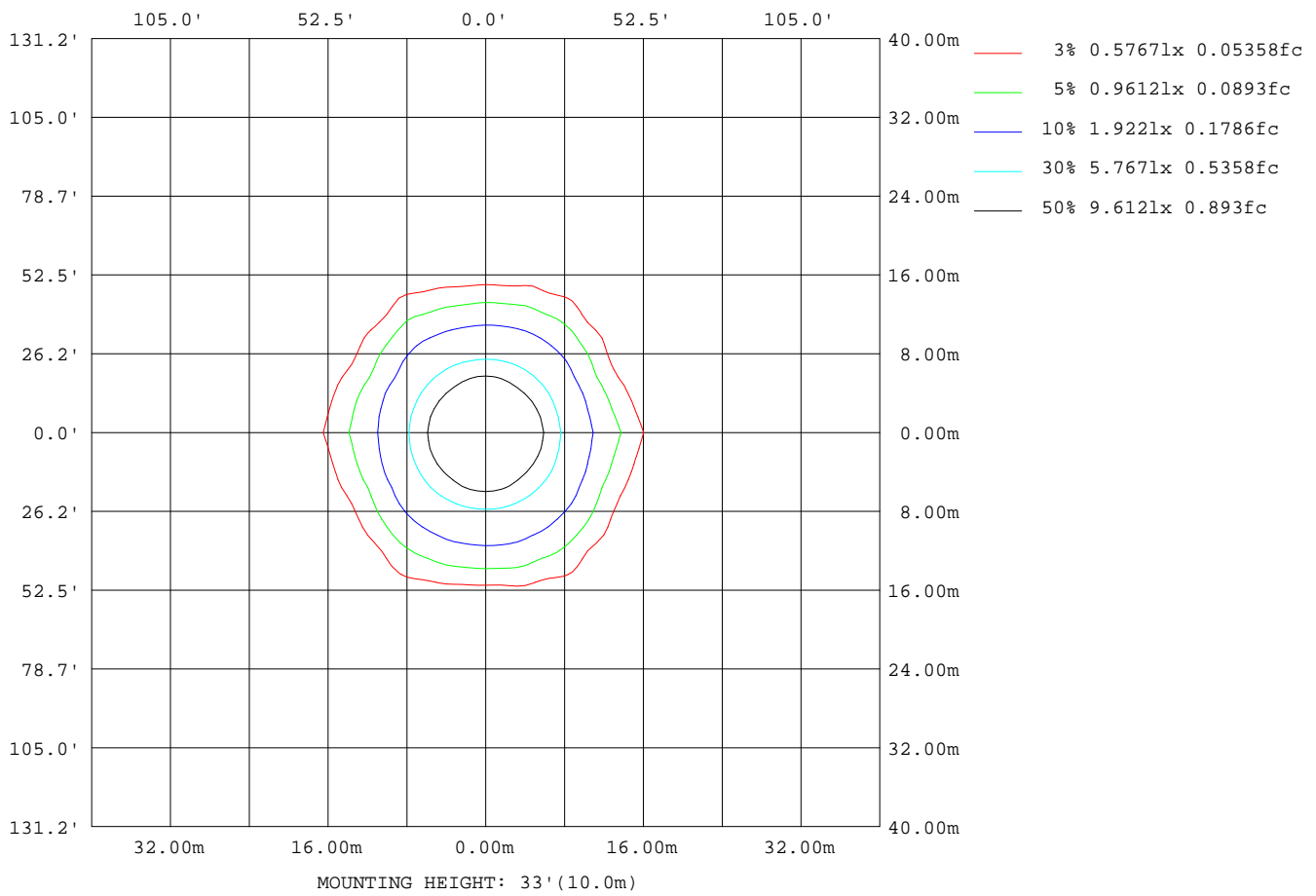
Note:The Curves indicate the illuminated area and the average illumination when the luminaire is at different distance.

βH() Range:-90 - 90DEG
 βH() Interval: 1.0DEG
 Test Speed: HIGH
 Temperature:25.3DEG
 Operators:
 Test Date:2023-06-03

V(B) Range:-75 - 75DEG
 V(B) Interval: 5.0DEG
 Test System:EVERFINE GO-2000B_V1 SYSTEM V2.0.404.7
 Humidity:65.0%
 Test Distance:8.240m [K=1.0000]
 Remarks: IL-PN595U(S) 3.000K

ISOLUX DIAGRAM

Test:U:230.23V I:0.1378A P:30.969W PF:0.9763 Freq:50.00Hz Lamp Flux:3565.7x1 lm		
NAME: IL-PN595U(S) 3.000K	TYPE:	WEIGHT:
SPEC.:	DIM.:	SERIAL No.:
MFR.: EVERFINE	SUR.:550*550	Shielding Angle:



β H() Range:-90 - 90DEG
 β H() Interval: 1.0DEG
 Test Speed: HIGH
 Temperature:25.3DEG
 Operators:
 Test Date:2023-06-03

V(B) Range:-75 - 75DEG
 V(B) Interval: 5.0DEG
 Test System:EVERFINE GO-2000B_V1 SYSTEM V2.0.404.7
 Humidity:65.0%
 Test Distance:8.240m [K=1.0000]
 Remarks: IL-PN595U(S) 3.000K

LED Avg.L Report

Test:U:230.23V I:0.1378A P:30.969W PF:0.9763 Freq:50.00Hz Lamp Flux:3565.7x1 lm		
NAME: IL-PN595U(S) 3.000K	TYPE:	WEIGHT:
SPEC.:	DIM.:	SERIAL No.:
MFR.: EVERFINE	SUR.:550*550	Shielding Angle:

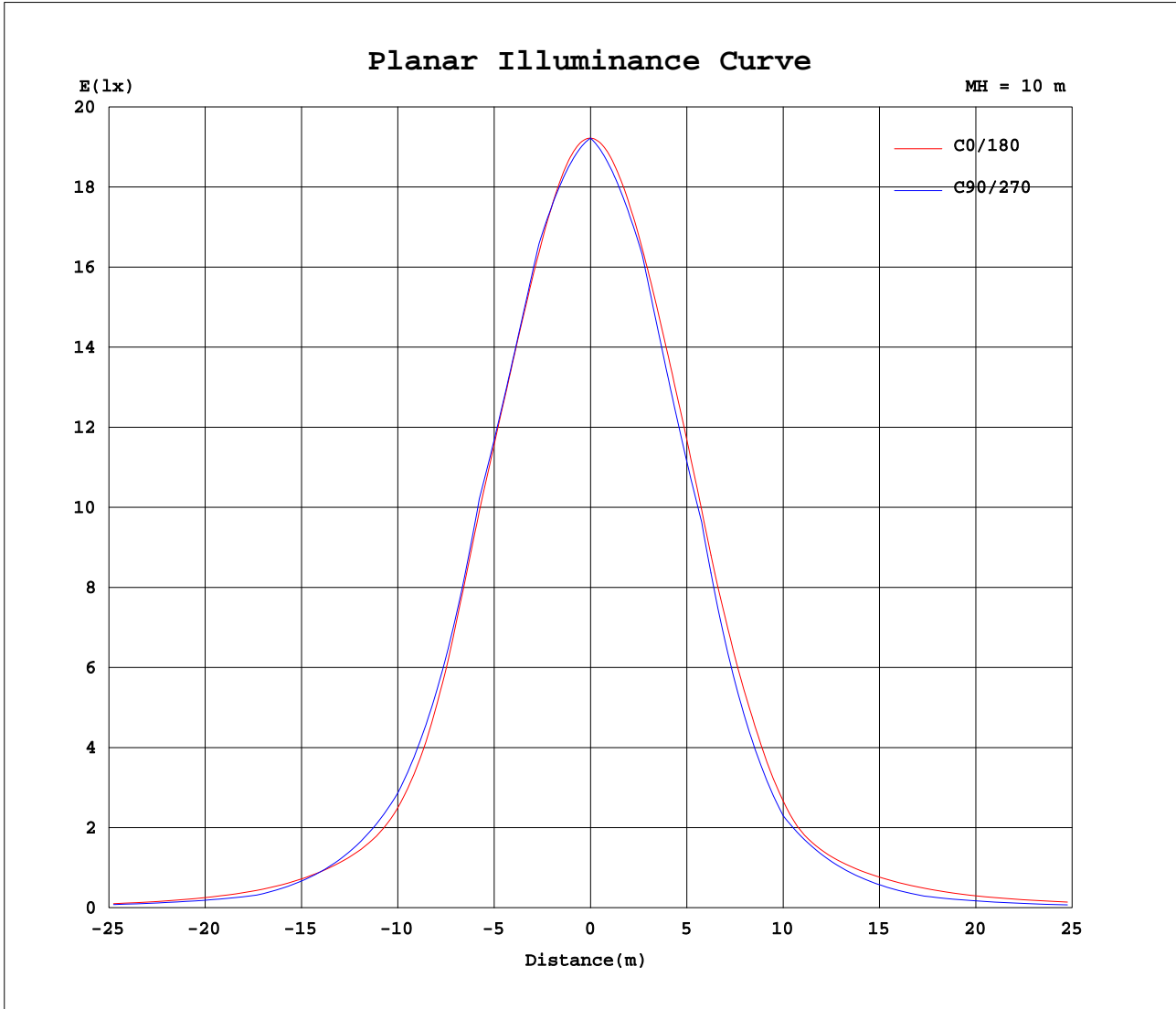
AvgL	cd/m2
L_0~180(65)av	2237
L_0~180(75)av	1831
L_0~180(85)av	1079
L_90~270(65)av	1452
L_90~270(75)av	832
L_90~270(85)av	0
L_45(65)av	2012
L_45(75)av	1959
L_45(85)av	0

Standard: GB/T 29293-2012

βH() Range:-90 - 90DEG
 βH() Interval: 1.0DEG
 Test Speed: HIGH
 Temperature:25.3DEG
 Operators:
 Test Date:2023-06-03

V(B) Range:-75 - 75DEG
 V(B) Interval: 5.0DEG
 Test System:EVERFINE GO-2000B_V1 SYSTEM V2.0.404.7
 Humidity:65.0%
 Test Distance:8.240m [K=1.0000]
 Remarks: IL-PN595U(S) 3.000K

Planar Illuminance Curve



β H() Range:-90 - 90DEG
 β H() Interval: 1.0DEG
 Test Speed: HIGH
 Temperature:25.3DEG
 Operators:
 Test Date:2023-06-03

V(B) Range:-75 - 75DEG
 V(B) Interval: 5.0DEG
 Test System:EVERFINE GO-2000B_V1 SYSTEM V2.0.404.7
 Humidity:65.0%
 Test Distance:8.240m [K=1.0000]
 Remarks: IL-PN595U(S) 3.000K

LUMINOUS DISTRIBUTION INTENSITY DATA

Test:U:230.23V I:0.1378A P:30.969W PF:0.9763 Freq:50.00Hz Lamp Flux:3565.7x1 lm		
NAME: IL-PN595U(S) 3.000K	TYPE:	WEIGHT:
SPEC.:	DIM.:	SERIAL No.:
MFR.: EVERFINE	SUR.:550*550	Shielding Angle:

Table--2

UNIT: cd

C(DEG) γ (DEG)	95	100	105	110	115	120	125	130	135	140	145	150	155	160	165	170	175	180	185
0	1922	1922	1922	1922	1922	1922	1922	1922	1922	1922	1922	1922	1922	1922	1922	1922	1922	1922	1922
5	1894	1893	1893	1893	1893	1893	1893	1894	1894	1895	1895	1897	1898	1899	1901	1903	1905	1908	1910
10	1867	1867	1866	1866	1865	1864	1862	1861	1859	1858	1857	1856	1858	1860	1863	1867	1872	1878	1871
15	1839	1837	1835	1833	1830	1827	1824	1822	1820	1818	1813	1810	1806	1803	1806	1812	1819	1828	1817
20	1751	1751	1751	1751	1752	1753	1756	1761	1763	1757	1753	1752	1745	1738	1731	1736	1746	1759	1743
25	1658	1654	1649	1644	1639	1638	1640	1645	1649	1658	1671	1664	1661	1655	1641	1634	1649	1669	1643
30	1570	1564	1553	1539	1522	1503	1488	1485	1493	1510	1520	1527	1527	1523	1508	1482	1494	1529	1488
35	1315	1314	1317	1321	1328	1336	1347	1325	1305	1295	1313	1331	1326	1321	1321	1280	1272	1315	1265
40	1063	1064	1068	1070	1066	1063	1070	1089	1107	1092	1053	1056	1083	1070	1064	1040	1000	1061	994
45	804	805	811	813	811	818	831	838	833	829	813	759	764	781	742	754	686	755	685
50	624	626	631	624	603	586	590	615	625	590	549	531	509	522	520	526	519	553	523
55	441	453	470	476	486	498	490	453	421	430	417	383	390	397	417	415	434	468	438
60	261	280	314	339	383	411	382	343	334	329	306	305	308	333	326	336	359	392	367
65	199	214	242	267	308	332	299	246	254	242	225	217	221	228	253	265	285	315	287
70	138	148	180	212	231	241	207	186	201	167	135	135	137	141	163	182	199	240	191
75	78.0	88.6	130	151	147	161	151	146	165	111	81.8	73.9	70.3	91.2	125	131	143	157	139
80	0.58	2.62	8.87	17.3	25.3	39.0	50.9	77.2	97.0	67.0	50.1	45.3	46.8	59.9	78.8	70.0	69.0	91.4	80.6
85	0.00	0.00	0.00	0.00	0.00	0.00	0.00	0.00	0.00	0.00	0.00	0.00	0.00	13.0	33.0	38.9	30.3	22.7	35.6
90	0.00	0.00	0.00	0.00	0.00	0.00	0.00	0.00	0.00	0.00	0.00	0.00	0.00	0.00	0.00	0.00	0.00	0.00	1.67

βH() Range:-90 - 90DEG
 βH() Interval: 1.0DEG
 Test Speed: HIGH
 Temperature:25.3DEG
 Operators:
 Test Date:2023-06-03

V(B) Range:-75 - 75DEG
 V(B) Interval: 5.0DEG
 Test System:EVERFINE GO-2000B_V1 SYSTEM V2.0.404.7
 Humidity:65.0%
 Test Distance:8.240m [K=1.0000]
 Remarks: IL-PN595U(S) 3.000K

LUMINOUS DISTRIBUTION INTENSITY DATA

Test:U:230.23V I:0.1378A P:30.969W PF:0.9763 Freq:50.00Hz Lamp Flux:3565.7x1 lm		
NAME: IL-PN595U(S) 3.000K	TYPE:	WEIGHT:
SPEC.:	DIM.:	SERIAL No.:
MFR.: EVERFINE	SUR.:550*550	Shielding Angle:

Table--3

UNIT: cd

C(DEG) γ (DEG)	190	195	200	205	210	215	220	225	230	235	240	245	250	255	260	265	270	275	280
0	1922	1922	1922	1922	1922	1922	1922	1922	1922	1922	1922	1922	1922	1922	1922	1922	1922	1922	1922
5	1904	1901	1898	1895	1893	1891	1890	1888	1887	1886	1885	1885	1884	1884	1884	1884	1885	1885	1886
10	1864	1859	1854	1850	1847	1847	1846	1847	1847	1848	1848	1848	1848	1848	1848	1848	1848	1848	1847
15	1807	1799	1794	1794	1796	1798	1800	1801	1802	1803	1804	1806	1808	1809	1810	1811	1811	1811	1810
20	1729	1720	1723	1728	1732	1731	1732	1736	1732	1722	1715	1710	1707	1705	1703	1702	1701	1700	1700
25	1622	1625	1634	1636	1635	1639	1621	1606	1596	1586	1579	1576	1578	1580	1585	1589	1591	1592	1591
30	1468	1487	1494	1491	1484	1469	1453	1429	1415	1414	1424	1436	1450	1462	1473	1480	1482	1480	1472
35	1267	1301	1295	1289	1284	1258	1229	1222	1234	1252	1241	1227	1214	1206	1200	1200	1205	1211	1216
40	1028	1044	1041	1036	994	981	1023	1028	1003	983	969	960	949	937	928	926	930	935	939
45	746	728	755	725	697	722	747	763	782	765	738	710	689	666	650	643	651	663	673
50	534	526	514	488	489	502	530	566	564	552	534	522	522	514	507	507	514	516	519
55	423	423	397	378	369	401	410	390	409	450	449	422	407	394	375	369	374	375	381
60	348	334	335	306	298	297	326	311	309	339	368	328	297	273	244	234	236	231	248
65	273	262	226	214	212	213	235	245	219	258	292	260	232	215	186	174	176	172	181
70	184	167	130	124	124	119	152	193	164	178	211	200	183	161	127	116	115	114	128
75	134	131	84.5	59.9	63.8	70.9	97.4	147	123	128	134	136	128	117	76.8	58.3	55.1	55.8	66.0
80	81.3	82.6	60.3	41.3	40.8	46.5	63.2	85.6	57.6	43.9	30.7	24.2	14.7	7.95	2.29	0.43	0.00	0.41	1.93
85	36.9	35.8	27.3	11.7	0.00	0.00	0.00	0.00	0.00	0.00	0.00	0.00	0.00	0.00	0.00	0.00	0.00	0.00	0.00
90	0.00	0.00	0.00	0.00	0.00	0.00	0.00	0.00	0.00	0.00	0.00	0.00	0.00	0.00	0.00	0.00	0.00	0.00	0.00

βH() Range:-90 - 90DEG
 βH() Interval: 1.0DEG
 Test Speed: HIGH
 Temperature:25.3DEG
 Operators:
 Test Date:2023-06-03

V(B) Range:-75 - 75DEG
 V(B) Interval: 5.0DEG
 Test System:EVERFINE GO-2000B_V1 SYSTEM V2.0.404.7
 Humidity:65.0%
 Test Distance:8.240m [K=1.0000]
 Remarks: IL-PN595U(S) 3.000K

LUMINOUS DISTRIBUTION INTENSITY DATA

Test:U:230.23V I:0.1378A P:30.969W PF:0.9763 Freq:50.00Hz Lamp Flux:3565.7x1 lm		
NAME: IL-PN595U(S) 3.000K	TYPE:	WEIGHT:
SPEC.:	DIM.:	SERIAL No.:
MFR.: EVERFINE	SUR.:550*550	Shielding Angle:

Table--4

UNIT: cd

C(DEG) γ (DEG)	285	290	295	300	305	310	315	320	325	330	335	340	345	350	355				
0	1922	1922	1922	1922	1922	1922	1922	1922	1922	1922	1922	1922	1922	1922	1922				
5	1886	1887	1888	1889	1890	1891	1892	1894	1895	1897	1899	1901	1903	1905	1908				
10	1847	1846	1846	1846	1847	1848	1849	1851	1854	1857	1858	1860	1862	1865	1869				
15	1809	1807	1805	1802	1799	1796	1793	1790	1792	1794	1798	1804	1805	1807	1810				
20	1700	1701	1705	1711	1721	1735	1741	1733	1725	1718	1720	1725	1733	1735	1738				
25	1588	1584	1580	1577	1576	1581	1599	1624	1657	1643	1630	1626	1635	1646	1647				
30	1461	1448	1438	1429	1428	1427	1430	1437	1467	1512	1520	1490	1485	1509	1518				
35	1221	1225	1228	1230	1231	1226	1231	1246	1246	1253	1294	1293	1246	1273	1292				
40	948	960	972	988	1000	994	990	998	1011	989	968	1019	983	965	999				
45	687	704	721	737	746	760	776	751	698	708	697	693	736	679	730				
50	530	539	536	537	533	537	536	532	512	456	475	477	500	502	534				
55	403	423	416	427	422	400	375	378	357	344	324	351	360	391	420				
60	292	303	308	352	361	305	291	298	261	246	260	272	293	304	319				
65	220	230	235	293	261	208	251	228	179	186	188	208	233	220	225				
70	171	176	183	218	193	162	204	134	113	117	117	139	168	172	166				
75	108	127	125	137	125	128	141	95.5	73.7	60.2	64.4	85.2	110	129	135				
80	7.17	14.8	21.8	32.1	43.7	55.9	82.4	65.5	45.7	36.3	37.9	50.7	71.4	73.1	66.2				
85	0.00	0.00	0.00	0.00	0.00	0.00	0.00	0.00	0.00	0.00	9.21	27.4	24.6	24.7	29.2				
90	0.00	0.00	0.00	0.00	0.00	0.00	0.00	0.00	0.00	0.00	0.00	0.00	0.00	0.00	0.00				

βH() Range:-90 - 90DEG
 βH() Interval: 1.0DEG
 Test Speed: HIGH
 Temperature:25.3DEG
 Operators:
 Test Date:2023-06-03

V(B) Range:-75 - 75DEG
 V(B) Interval: 5.0DEG
 Test System:EVERFINE GO-2000B_V1 SYSTEM V2.0.404.7
 Humidity:65.0%
 Test Distance:8.240m [K=1.0000]
 Remarks: IL-PN595U(S) 3.000K